

INTERLUBE

Leaders in Lubrication Solutions



LUBEPLUS GX Centralised Lubrication System Multi-Industry Applications



Interlube Systems Ltd - maximising industrial performance world-wide...

LUBEPLUS GX ELECTRICALLY OPERATED SINGLE LINE SYSTEM

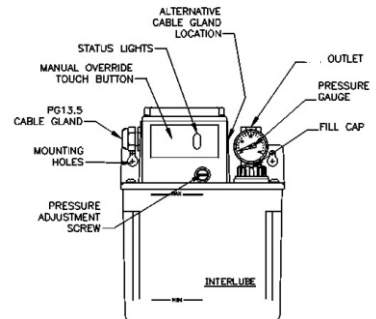
LUBEPLUS GX has been designed to operate with a positive displacement unit (PDU) or with metering flow unit systems. The lubricator is available with a wide combination of condition monitoring features and a choice of 'with' or 'without' microprocessor control.

The microprocessor provides the option of timed or impulse count control and automatically monitors pressure failure and low level condition in the reservoir.

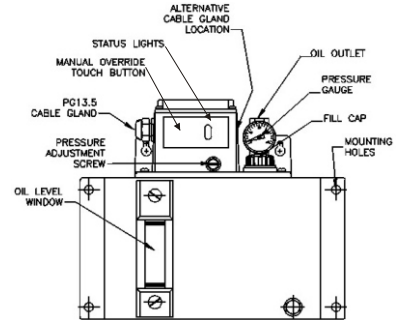
A lubricator without microprocessor enables the user to control the lubrication cycle from the parent machine. A range of condition monitoring features is available as an option.

Lubrication points in a typical LUBEPLUS GX system may be fitted with flow units used with oil or the more precise Interlube Positive Displacement Units (PDU's) which handle fluid greases and oil.

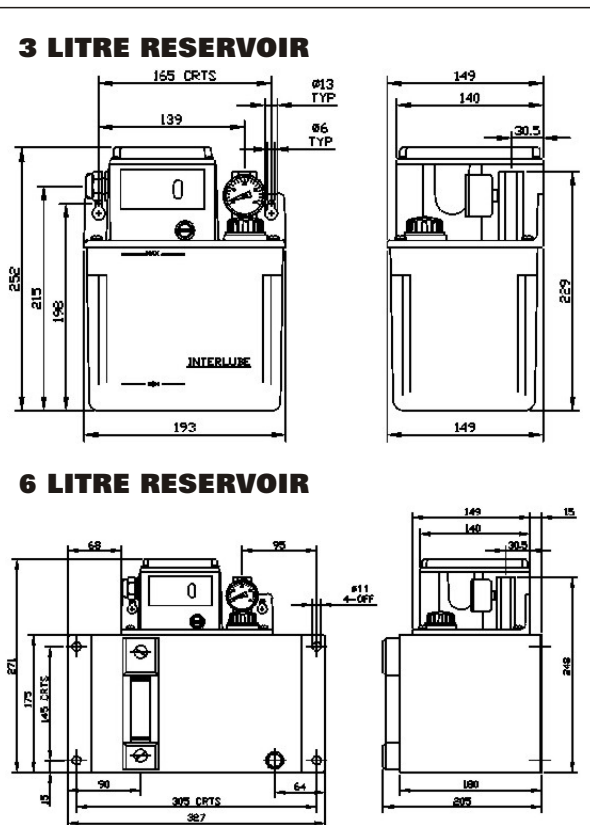
GX (3 litre Reservoir)



GX (6 litre Reservoir)



GX DIMENSIONS



TECHNICAL DATA

<u>ELECTRICAL DETAILS</u>	
Voltage/rating:	230/240 VAC or 110/120 VAC at 50/60 Hz
Motor Type:	Open frame shade pole motor
Motor R.P.M.:	2500 at 50 Hz / 3000 at 60 Hz
Electrical Connection:	Terminal block
Electrical Entry:	Pg 13.5
<u>Float Switch</u>	
Voltage/rating:	150VAC / 200VDC 0.7ADC
Mode:	Normally Closed
<u>Pressure Switch</u>	
Voltage/rating:	42V Max, 100V A.
<u>LUBRICATOR DETAILS</u>	
Pump Output Volume:	110 cc/min at 50 Hz 130 cc/min at 60 Hz
Ambient Temperature:	40° C
Recommended Lubricants:	15-480 cSt Oil and NLGI000 fluid grease
Operating Pressure:	3 - 25 bar
Oil Temperature:	60° C
Reservoir Capacity:	3 or 6 litre
Weight (full):	Approx. 6 kg
Protection Class:	IP54
<u>Pressure Switch Settings</u>	
Flow Units:	3 bar
PDU's:	12 bar
Pressure Gauge:	0 - 40 bar

LUBEPLUS GX with controls

The standard unit is supplied with an integral controller, which allows selection of either a TIMED MODE of operation or a COMBINATION MODE of time period and impulse count delay period. Selection of modes and settings is achieved via a simple DIL switch.

CONTROL SELECTIONS

8 Timed motor ON settings

12 seconds 36 seconds
16 seconds 44 seconds
20 seconds 52 seconds
28 seconds 60 seconds

16 Timed motor delay options

2 minutes 60 minutes
4 minutes 75 minutes
8 minutes 90 minutes
10 minutes 120 minutes
12 minutes 180 minutes
15 minutes 240 minutes
30 minutes 360 minutes
45 minutes 480 minutes

16 Pulse count options

20 pulses 2600 pulses
100 pulses 3000 pulses
500 pulses 3400 pulses
750 pulses 3800 pulses
1000 pulses 4200 pulses
1400 pulses 4600 pulses
1800 pulses 5400 pulses
2200 pulses 5800 pulses

** The motor contains an automatic thermal cut-out, but to ensure the motor does not overheat it is advised that the pump is operated by no more than 12 seconds in every 2 minute period.*

** Other TIMED/PULSE delay options are available.*

STANDARD FEATURES

Pressure monitoring

An internal, factory-set pressure switch monitors the system pressure. This switch is connected to the control board signalling a low pressure warning to the RED LED.

A low pressure warning stops the operation of the lubricator until corrective action has been taken. A pressure gauge is also provided for visual monitoring.

Lubricant level monitoring

A low level switch is mounted within the reservoir. Linked via the microprocessor to the RED LED on the lubricator fascia, it can also be connected externally via the control board, providing to operate an external alarm signal or stop machining cycles. A low level warning will not automatically stop the lubricator.

This may be connected externally to provide a signal to the parent machine.

GREEN LED showing:

Steady on = pump in delay mode
Flashing = pump operating

RED LED showing:

Off: no warning signals
Steady on = pump lubricant low level warning.
Flashing + sounder = pump lubricant low pressure warning

Manual Override/Reset

A touch panel is provided to enable an instant lubrication cycle to be achieved at any time. This will last for the duration of the touch, plus the selected ON period when released. In each control mode pressing the override panel causes the lubricator controller to reset and commence a lubrication cycle.

Pre-lubrication Cycle

LUBEPLUS GX lubricators with control provide an instant pressure cycle on machine start-up or reset (if the supply is routed via the machine on/off system).

LUBEPLUS GX without controls

This model is normally operated in conjunction with the control system of the parent machine. The physical size and mounting arrangement is identical to a GX lubricator with controls. If the pump is to be operated for more than 12 seconds the 'DELAY' period must be not less than 2 minutes. For applications inside this time span please consult Interlube Systems Ltd.

Condition monitoring

The following condition monitoring options are available: Pressure Switch, Pressure Gauge, Float Switch for oil, Float Switch for soft grease, 'Power on' Lamp and a Manual override press button.

Ordering method

When ordering a LUBEPLUS GX system the required Part No. Is compiled from matrix 1 for pumps without controls and from Matrix 2 for those with controls (see below).

Reservoir Sizes

Unless otherwise specified, all models are supplied complete with a 3 litre capacity, reservoir. A 6 litre sheet metal reservoir is also available.

GX DIMENSIONS (matrix 1 & 2)

1. WITHOUT CONTROLS

		GX X X X X				
		FLOAT SWITCH	PRESSURE SWITCH	PRESSURE GAUGE		
1	P.D.U.	1	-	-	3	3 LITRE PLASTIC RESERVOIR
2	FLOW UNIT	2	X	-	6	6 LITRE METAL RESERVOIR
		3	X	X		
		4	X	-	X	
		5	X	X	X	
		6	-	X	-	
		7	-	X	X	
		8	-	-	X	

2. WITH CONTROLS

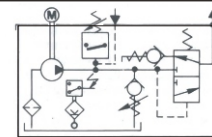
		GX X X X X				
		STANDARD CONTROLS				
3	P.D.U.	1	110/120 VAC 50/60 Hz	3	3 LITRE PLASTIC RESERVOIR	
4	FLOW UNIT	2	220/240 VAC 50/60 Hz	6	6 LITRE SHEET METAL RESERVOIR	

E.g.: Gx3243 is a GX gear pump using a PDU system at 220VAC with float switch and pressure gauge with a 3 litre reservoir.

OPTIONS

- Fluid grease option available with electronic level sensor
- Cable entry available left (standard) or right hand side of the GX pump
- Pressure relief adjustment available, located in the front face or within the reservoir
- Optional lubricant outlet threads and connections available

CIRCUIT DIAGRAM



Hydraulic Circuit (PDU's only)

Switched Live 1
Neutral 2
Permanent Live 3
Earth 4
Pressure Switch 5
Pressure Switch 6
Float Switch 7
Float Switch 8

Without Controls

Motor
Float Switch
Pressure Switch

Motor
Float Switch
Pressure Switch
OR Sensor (Fluid Grease)

With Controls

Live 1
Neutral 2
Earth + impulse count 3
Impulse count (zero volt make & break) 4
Pressure switch (zero volt make & break) 5
Common P/S & F/S 6
Float switch (zero volt make & break) 7

INTERLUBE

Leaders in Lubrication Solutions

Interlube Systems Ltd
St Modwen Road, Parkway Industrial Estate
Plymouth, Devon, England PL6 8LH
Tel: +44 (0)1752 676000
Fax: +44 (0)1752 676001
e-mail: info@interlubesystems.com
Web Site: www.interlubesystems.com



www.interlubesystems.com
HELP DESK · PRODUCT RANGE · LITERATURE REQUEST

For advice on which product is most suitable for your needs - visit our web site from where you can e-mail us your requirements. Our Help Desk will respond within 24hrs by return e-mail or phone.

