



**HCLP**

**HYDRAULIC CARTRIDGE PUMP**

# DESCRIPTION

The HCLP hydraulic cartridge lubricator is a compact device with a robust design, intended for use with 400 g screw-type grease cartridges of the Lube Shuttle type with a G1" thread. The unit is operated by pressure from an external hydraulic circuit. The device is suitable for use in combination with progressive distributors and allows precise adjustment of the dosage to meet the specific application requirements. (Cartridges and inlet straight fittings are not scope of delivery).

# APPLICATION

Thanks to the compact installation dimensions and the parameters that the pump achieves, the lubricator is widely used in mobile applications.

# OPERATION

When pressurized oil is supplied to the inlet line, the device dispenses the lubricant into the connected lubrication circuit. Once the hydraulic pressure is released, the working piston automatically returns to its initial position and draws lubricant into the dosing chamber.

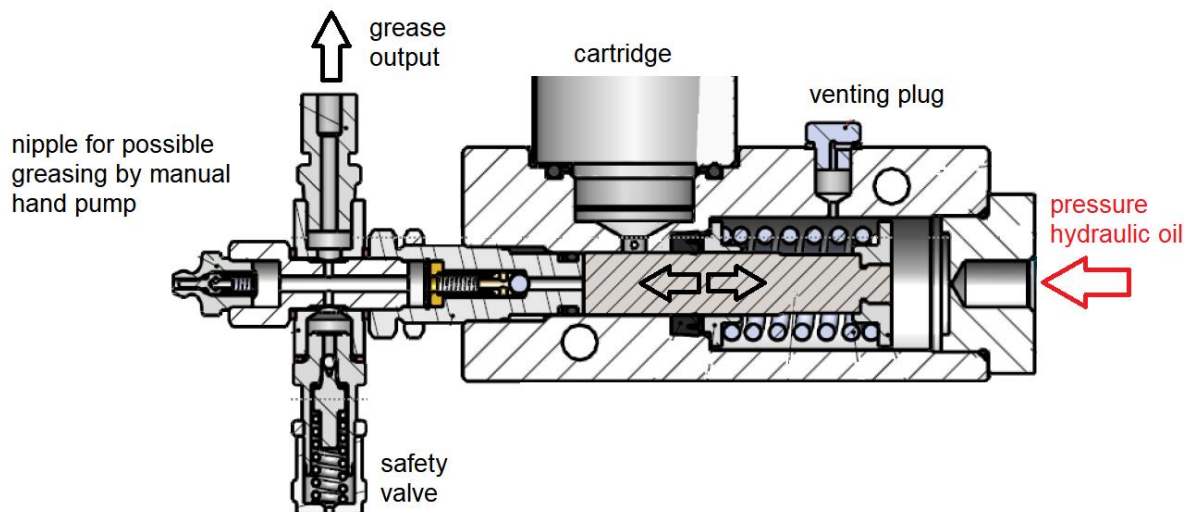


Figure 1 Operating

The lubricant dose is adjusted by loosening the lock nut with a size 24 wrench and unscrewing the working unit to the required distance and re-securing the lock nut as shown in Figure 2.

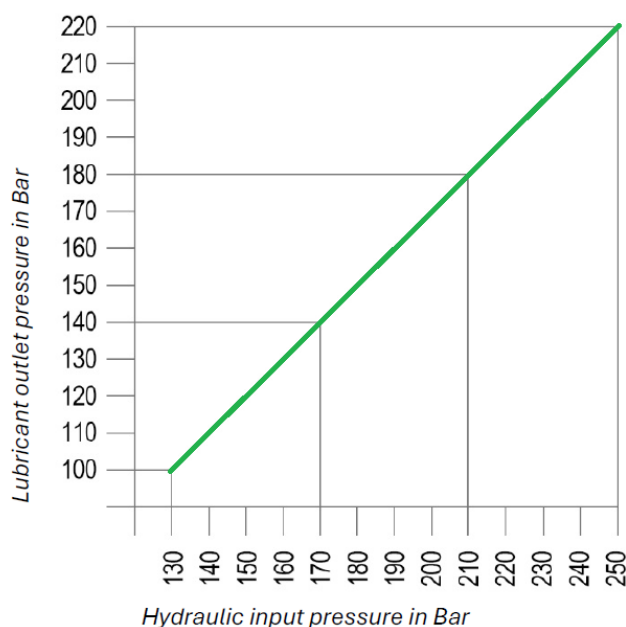
# TECHNICAL DATA

## Technical parameters of HCLP

Max. operation pressure	220 bar
	depending on the pressure of the hyd. circuit
Adjustable dose	0,2 – 2 cm <sup>3</sup> / stroke
	according dimensional drawing
Cartridge	Lube Shuttle 400g
Inlet	G 1/4
Outlet	G 1/4
Outlet fitting	Ø 6 mm
Outlets	1
Number of strokes	1 stroke / 1 pressurization and relief of the hydraulic circuit
Grease	NLGI 1,2
Hydraulic system parameters:	Min. system control pressure
	Max. system control pressure
	Max. pressure after system relief
	130 bar
	250 bar
	10 bar

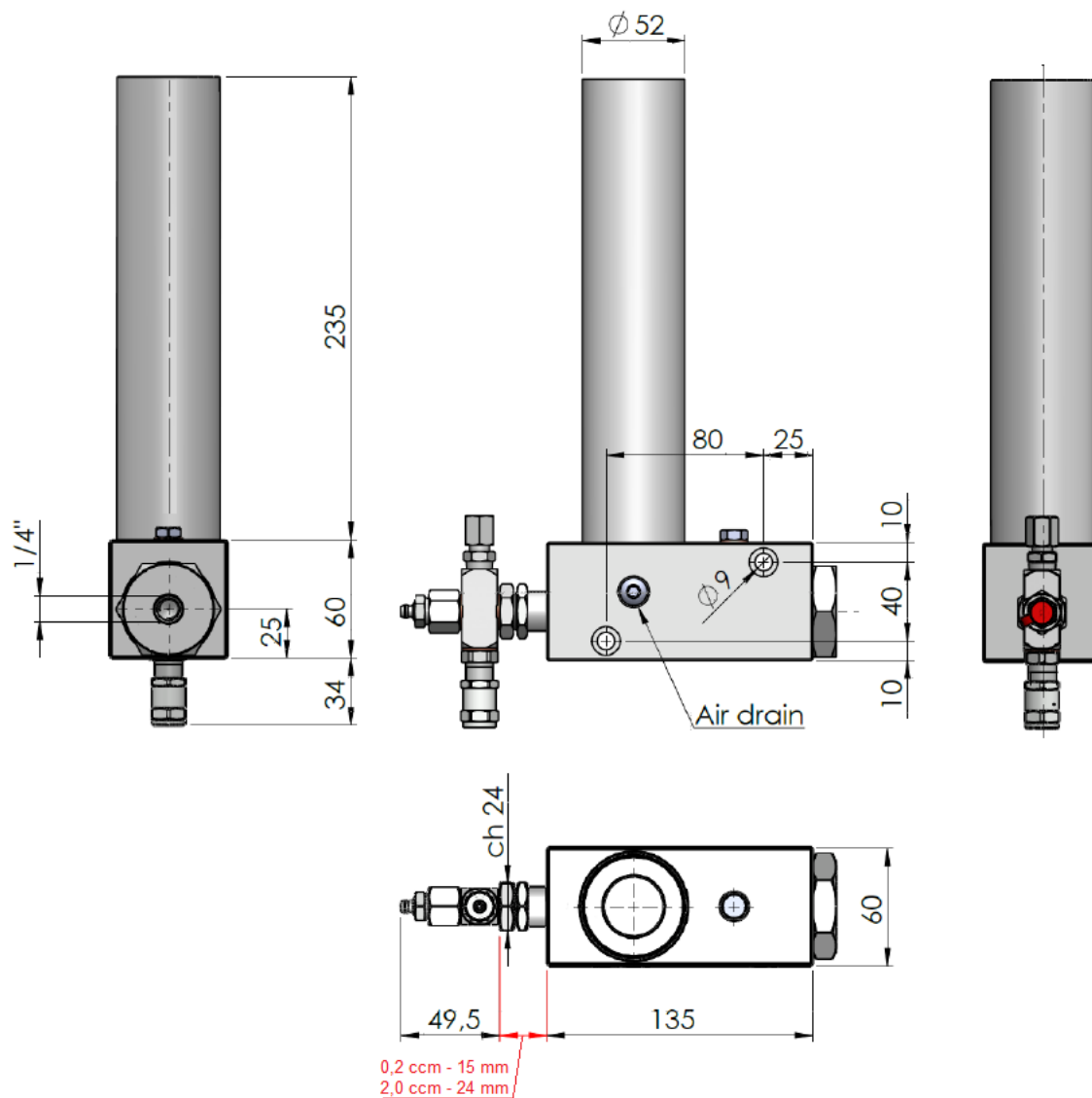
## Pressure transmission

Lubricant pressure depends on the pressure in the hydraulic circuit



# DIMENSIONAL DRAWING

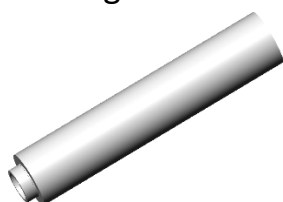
ID	TYPE
9452840	Hydraulic cartridge pump HCLP



*Figure 2 Dimension of HCLP*

# ACCESSORIES

Cartridge



Code	Type	Volume	Grease
425 000 332 332	Lube Shuttle	400 g	Empty
111 313 500 101	Lube Shuttle	400 g	NLGI 1
111 313 500 102	Lube Shuttle	400 g	NLGI 2

Straight connector (24°)



Code	Type	Ø	Thread	Function
703 015 000 052	GE 6 LR WD	6	G1/4	input
703 015 000 053	GE 8 LR WD	8	G1/4	input
703 015 000 035	GE 10 LR WD	10	G1/4	input
703 015 000 038	GE 12 LR WD	12	G1/4	input

# QUALITY ASSURANCE

Made in EU



We are manufacturer of central lubrication systems, lubrication technology, hydraulics and special systems for rail vehicles.

Our company builds on more than 80-year of tradition in mechanical engineering production; together with an emphasis on production quality and investments into technical development, this guarantees a high level of supplied products and services.

We provide project design based on customer requirements and technical specifications, delivery, installation and commissioning directly at the customer's site. Our after-sales services include service, preventive maintenance, spare parts supply and consultancy.

All the company's activities are carried out in accordance with the quality management system according to ISO 9001:2015 and the environmental management system to ISO 14001:2015. Other certified processes of our company include welding with CL1 level certification according to EN 15085-2+A1:2023.

## WHERE YOU CAN FIND US



TRIBOTEC, spol. s r.o.  
Košuličova 656/4  
619 00 Brno  
Česká republika



+420 543 425 611  
tribotec@tribotec.cz

[www.tribotec.eu](http://www.tribotec.eu)

# Tribotec